

**SUBDIVISION PLAN OF LOT 7, DISTRICT LOT 30, WELLINGTON DISTRICT, PLAN VIP65104 AND
LOT B, DISTRICT LOTS 14 & 30, WELLINGTON DISTRICT, PLAN VIP66085.**

PLAN EPP69239

BCGS 92F.030

SCALE 1:500
0 10 20 30 50 metres

THE INTENDED PLOT SIZE OF THIS PLAN IS 664m IN WIDTH BY 560m IN HEIGHT (D SIZE) WHEN PLOTTED AT A SCALE OF 1:500

LEGEND

- STANDARD IRON POST FOUND.
- ⊙ CONTROL MONUMENT FOUND.
- STANDARD IRON POST PLACED.
- STANDARD LEAD PLUG PLACED.

INTEGRATED SURVEY AREA No. 70, CITY OF NANAIMO, HA08(2553) 3.0.0.EC.1.A1A.

ORD BEARINGS ARE DERIVED FROM OBSERVATIONS BETWEEN GEODETIC CONTROL MONUMENTS 9855019 AND 9855037.

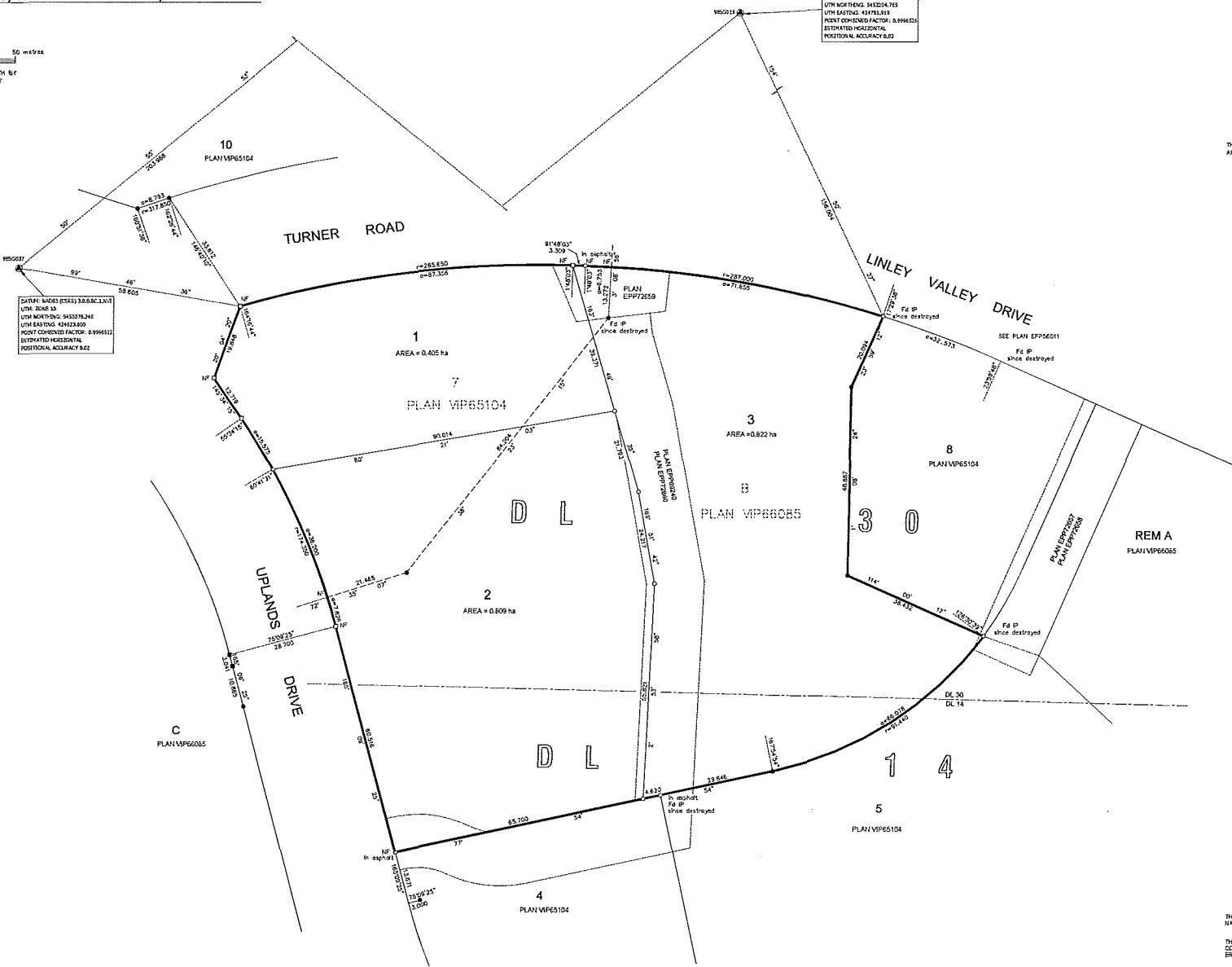
THE UTM COORDINATES AND ESTIMATED HORIZONTAL POSITIONAL ACCURACY ACHIEVED ARE DERIVED FROM CONVENTIONAL SURVEY OBSERVATIONS TO GEODETIC CONTROL MONUMENTS 9855019 AND 9855037.

THIS PLAN SHOWS HORIZONTAL GROUND-LEVEL DISTANCES UNLESS OTHERWISE SPECIFIED TO COMPUTE DEDU DISTANCES. MAXIMUM GROUND-LEVEL DISTANCES BY THE AVERAGE COMBINED FACTOR OF 0.9998500 WHICH HAS BEEN DERIVED FROM AN AVERAGE OF SURVEY WORKMENTS WITH INTEGRATED SURVEY AREA No. 70.

DATUM: NAD83 (CSRS) 84.0.EC.1.A1A
UTM ZONE 18
UTM NORTHING: 5423216.1E
UTM EASTING: 424232.800
POINT COMBINED FACTOR: 0.9998500
ESTIMATED HORIZONTAL POSITIONAL ACCURACY: 0.602

DATUM: NAD83 (CSRS) 84.0.EC.1.A1A
UTM ZONE 18
UTM NORTHING: 5423216.1E
UTM EASTING: 424232.800
POINT COMBINED FACTOR: 0.9998500
ESTIMATED HORIZONTAL POSITIONAL ACCURACY: 0.602

THIS PLAN LIES WITHIN THE JURISDICTION OF THE APPROVING OFFICER FOR THE CITY OF NANAIMO.



Williamson & Associates
Professional Surveyors
3068 Burrard Road
Nanaimo B.C. V9T 4B5
Phone: 1024-37 SUBDIVISION BASEPLAN: 10254
SUBD1236

THIS PLAN LIES WITHIN THE REGIONAL DISTRICT OF NANAIMO.

THE FIELD SURVEY REPRESENTED BY THIS PLAN WAS COMPLETED ON THE 11th DAY OF SEPTEMBER, 2017 BY: BRIAN S. HENNING, B.C.L.S. 012.